



Rocket Continuous Modernization Kit (CM-Kit)

Accelerating modernization
with IBM® i and Z®



Contents

- 03 Introduction
- 04 Get motivated. Get moving. Get masterful.
- 05 Modernization for IBM i and IBM Z workflows: Always on!
- 06 Jump-start and run a true modernization engine
- 08 Create APIs easily, informed by business-value data
- 09 Reinvent your UI/UX, anywhere
- 10 Optimize with outside professional expertise
- 11 Accelerate modernization. Now.
- 11 Get started today with continuous modernization
- 12 CM-Kit technical requirements



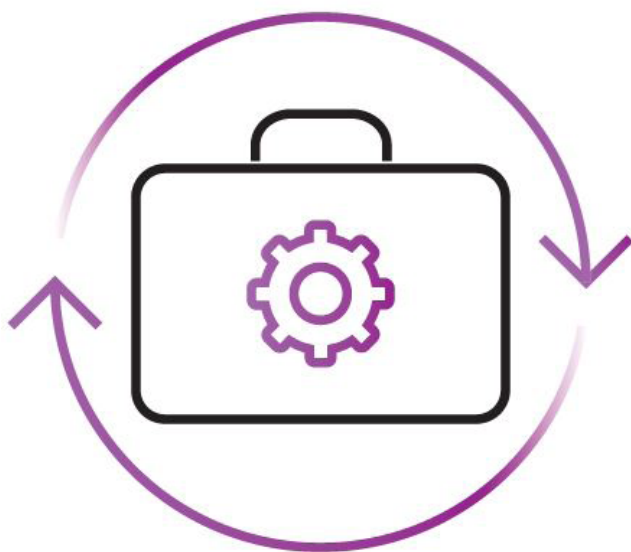
Introduction

IBM® i and IBM zSystems® remain a mainstay in banking, finance, healthcare, manufacturing, distribution, and retail sectors. These industries heavily rely on IBM i and Z for their stability and reliability in running critical business applications such as ERP systems.

Meanwhile, IBM i/Z Systems have experienced considerable changes in the last decade. These systems no longer operate in isolated environments or solely on-premises. Their coding has evolved beyond legacy languages like COBOL or RPG, now accommodating open-source languages, databases, and development tools. They can operate in the cloud and interface with Windows, web, mobile, IoT, and web service platforms. These data-rich systems are fueling the work of the business-IT landscape as it grows faster, more dynamic, and more competitive.

Thus, IBM i and IBM Z users have a prime opportunity for modernization. However, modernization efforts face challenges, including stiff competition from SaaS vendors, evolving stakeholder expectations, and the need for integration with broader IT ecosystems.

Are you ready? IT decision-makers face new challenges in prioritizing automation workflows and selecting appropriate tools, while IT leaders race to prioritize modernizing mission-critical processes that can deliver. Addressing these challenges requires comprehensive modernization solutions.



Get motivated. Get moving. Get masterful.

Rocket's Continuous Modernization Kit (CM-Kit) is a comprehensive suite of tools that empowers you to plan, develop, and execute your IBM i and IBM Z modernization strategy with confidence and control. The Rocket CM-Kit includes [Rocket® Process Insights](#), [Rocket® API](#), and [Rocket® Modern Experience](#).

Rocket Software's CM-Kit provides you with the means to construct data-informed strategies for IBM i/Z modernization that yield enduring business outcomes.

CM-Kit facilitates heritage core system modernization for IBM i and IBM Z users without requiring expertise in older programming languages (COBOL or RPG). It simplifies cloud migration complexities, streamlines integration across diverse environments, enhances productivity, and empowers data-driven decision-making.

The CM-Kit provides a holistic approach to modernization, encompassing analysis, execution and monitoring. It offers a seamless transition from insights to action, empowering organizations to ensure your applications perform at peak levels.

At the core is a closed-loop, continuous modernization engine powered by data-driven decisions and connected by a universal operations hub. Empower your best minds and creative approaches when modernizing your applications and workflows. Our experienced Professional Services team can help further, meeting you where you live.

You can streamline and accelerate informed actions within your IBM i/Z modernization plan/strategy — whatever its direction or goal:



Core application modernization: Rocket Process Insights prioritizes high-value processes. Modernize core applications with Rocket Modern Experience and Rocket API without COBOL or RPG expertise.



Hybrid cloud complexity: Uncover which workflows are ripe for refactoring to cloud and build a strategy based on what's best for the business, not on the limitations of your applications.



Integration hurdles: Rocket API enables seamless integration across cloud-based, on-premises, or managed service environments, enhancing your cloud strategy.



Productivity improvement: Rocket Modern Experience transforms IBM i/Z green screen applications into user-friendly interfaces, boosting productivity and satisfaction.



Data-driven decision making: Rocket Process Insights optimizes workflows, eliminates redundancies, and simplifies API creation, saving time and maximizing modernization efforts.

Whether you're just getting started with modernization or are five years in, Rocket Continuous Modernization can deliver value quickly.

Benefits

Visualize workflows in their totality.

Leverage operations to create data-informed actions and decisions.

Modernize on demand based on actual behavior, not guesswork.

Build more dynamic UX/UI experiences.

Connect and automate IBM i and Z applications.

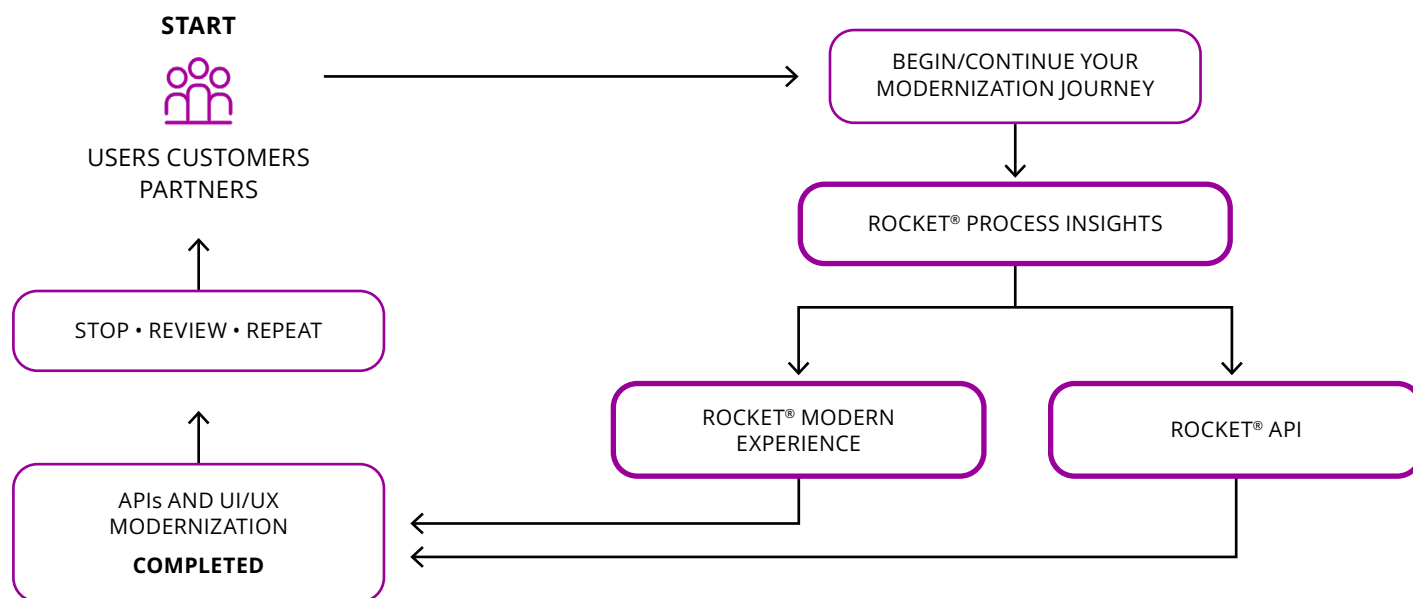
Integrate with third-party applications such as Salesforce and ServiceNow.

Prepare for mainstream AI in the enterprise.

Modernization for IBM i and IBM Z workflows: Always on!

Today, modernization is a process not an event. While an initial modernization project might have a completion date, modernization work continues indefinitely. With every new business tool stood up or new expectation communicated from customers, more modernization work happens. This creates an endless, often-opaque production line that all too often feels like you're running in place. Now stretch this reality across multiple modernization projects.

Rocket Continuous Modernization Kit provides a modernization path that meets business and competitive demands — all of them.



Start by visually tracking how your organization engages with your data and business logic, with fresh, always-current insights into your business processes.

Powered by the Rocket Process Insights Heat Map, you get a complete view of your most widely used workflows and processes. Use these insights report to decide which APIs make business sense to produce.

Or import these insights into Rocket Modern Experience to inform which UI main screens you should consider modernizing. Process Insights feed directly into Rocket's modern UI/UX and API tools.

Next, STOP and REVIEW what's been created, then set up these tools to consistently monitor your workflows and processes. You can use the CM-Kit at any time to ensure your IBM i or IBM Z applications perform at top level.

Regardless of how large the modernization challenge is, you'll never again have to endure time-intensive spot-checking workflow-automation targets due to volume or urgency.

Are your developers stressing over the thought of modernizing 100 critical "antique" applications or workflows? (Data-driven Insights may reveal that it's more like 20.) Is your business analyst wrestling with a persistently costly and high-stakes customer-facing workflow? (Not with the right insights.)

With value-driven modernization, the opportunities for application transformation are limitless, easily findable/defensible, and immediately actionable.

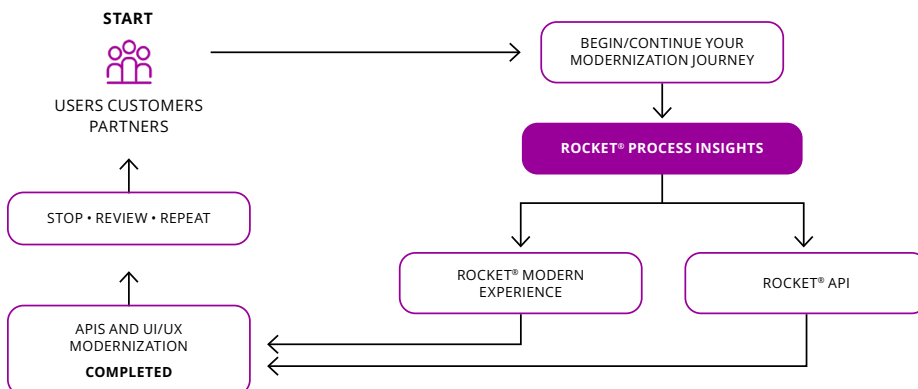
With Rocket Continuous Modernization, you can build and execute a data-driven hybrid cloud strategy that fits what your business needs and when it needs it. Uncover the workflows most used by the business and with a click of a button refactor those workflows and easily move them to the cloud. Seamlessly scale your infrastructure up or down to perfectly align with your business needs. And, if security is your top priority, leave your sensitive data on-prem. You decide where your data and applications live, not the limitations of technology. Rocket Continuous Modernization supports you wherever you are in your hybrid cloud journey, wherever you are in the world.

Rocket Process Insights

Rocket Process Insights is a dynamic visualization tool that lets you see your end-to-end workflows and applications in their totality. It gives you the clarity needed to build and operate intelligent, data-driven modernization plans at scale. And the best part? Deployment is easy, with no COBOL or RPG expertise required, giving you peace of mind and reassurance.

With Insights, you can deliver experiences that align with how people engage with your company — not how your IT is built. (Not surprisingly, it's the only automation tool to deliver quick and significant ROI from automating your IBM i and IBM Z processes.)

Jump-start and run a true modernization engine



Benefits

Deliver more compelling user experiences.

Increase job satisfaction.

Improve customer satisfaction and retention.

Bolster competitive strength and agility.

Achieve high ROI.



Today's businesses rely on their IBM i and Z systems to run hundreds of critical applications that are vital to their operations. For those businesses, a data-informed IBM i or Z modernization plan will immediately and positively impact business productivity and ROI. Rocket Process Insights delivers needed insights into workflows that enable businesses to modernize and evolve their IBM i and Z platforms without disruption to current operations."

PETER RUTTEN

Research Director, Performance Intensive Computing Solutions
IDC

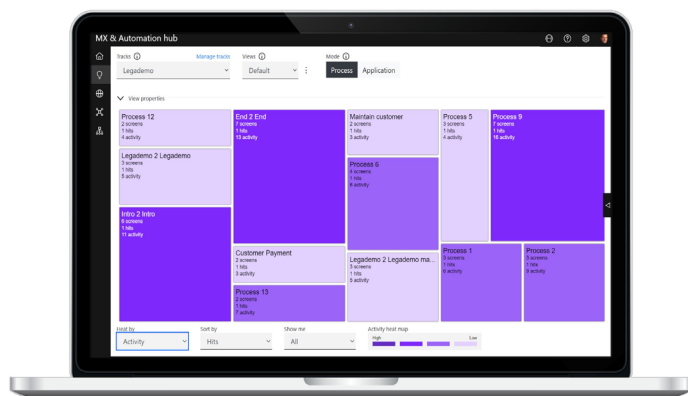
Start by looking at how people are using your key business processes, based on the data. Let Rocket Process Insights run and collect data in the background of your day-to-day operations. You can track and analyze every data interaction or workflow within every IBM i or Z app or automation. This saves enormous amounts of time in zeroing in on the highest-potential productivity opportunities from among the hundreds or thousands of processes in your infrastructure.

Once set up, Process Insights monitors your workflows, automatically watching for hidden problems or process-improvement opportunities.

IT, Development, and Ops get real-time insight for use in creating new workflows, updating or fine-tuning applications, or prioritizing modernization plans. With Insights, your business analysts become even more productive. Meanwhile, IT leadership reduces the risk that a modernization initiative goes off the rails or fails.

Ready to roll with your modernization? With "one-click" integration between Rocket Process Insights and the two modernization tools, your analysts or developers can get producing solutions immediately.

Your developers and analysts are off and running from Day One, while you break the cycle of RPG dependency.



Rocket Process Insights Heat Map, offers a complete view of your most widely used workflows and processes.

Benefits

Visualize end-to-end workflows.

Understand what's mission-critical.

Eliminate the lag between discovery and automation.

Prioritize decisions and investments.

Right-size the number of developers to projects.

Ensure quality user experiences with modern UI.

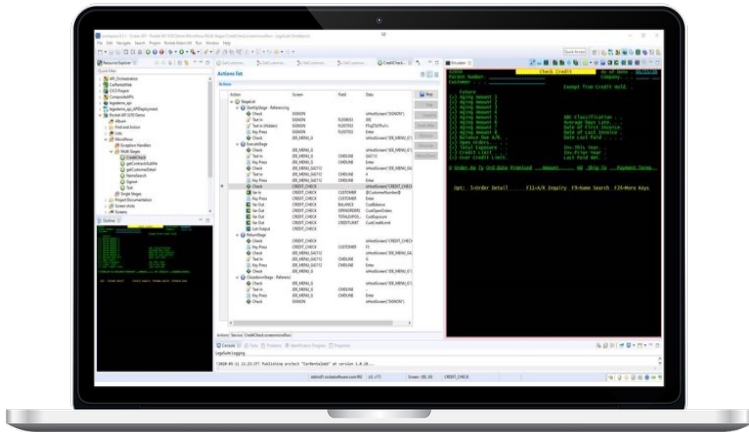


Rocket API

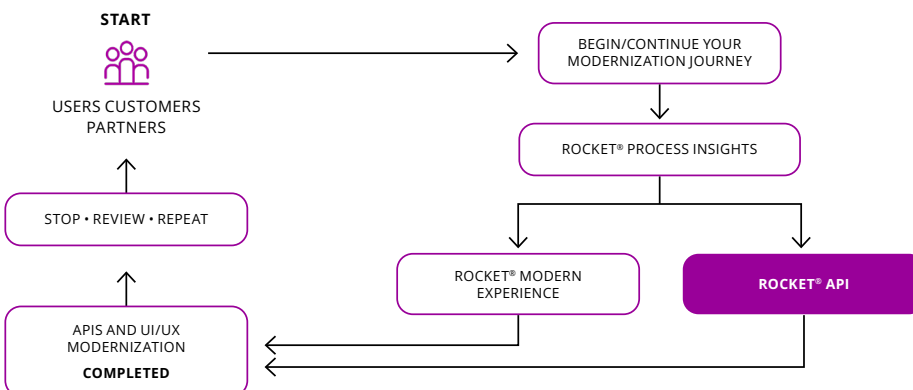
Rocket API automates the manual work that impedes productivity and often introduces errors when connecting IBM i and Z to the rest of the business.

Developers can build APIs quickly, integrating them with currently used screens, programs, and data. They can easily create micro-flows and composite APIs, manage them centrally, and deploy them securely on prem or in a cloud. Built-in intelligence ensures that codebase changes do not break the connection between your APIs and the applications that call them.

By creating processes based on timely insights into real behavior, you can quickly identify and prioritize which APIs to build. With API creation part of a continuous modernization engine, your developers and analysts can stop, review, and sanity-check modernization work anytime against current data, speeding up the creation of highly functional APIs. Developers can deploy, iterate, and update at will, fueled by fresh, current, and actionable insights.



Create APIs easily, informed by business-value data



Benefits

- Visualize end-to-end workflows.
- Understand what's mission-critical.
- Eliminate the lag between discovery and automation.
- Prioritize decisions and investments.
- Right-size the number of developers to projects.
- Ensure quality user experiences with modern UI.
- Deploy in cloud and scale as per your business needs.

It often makes more sense to keep the core system that does its job really well and find exceptional technologies like Rocket API to wrap around it. Rocket has allowed us to breathe new life into our core system by allowing for the latest web-based user experience technologies.”

KURT BONIGUT
CIO
Frontline Insurance

Rocket Modern Experience

Rocket Modern Experience creates transformative modern front ends for your IBM i and IBM Z applications and workflows (including from green screens) that can run anywhere: browsers, smartphones, and tablets.

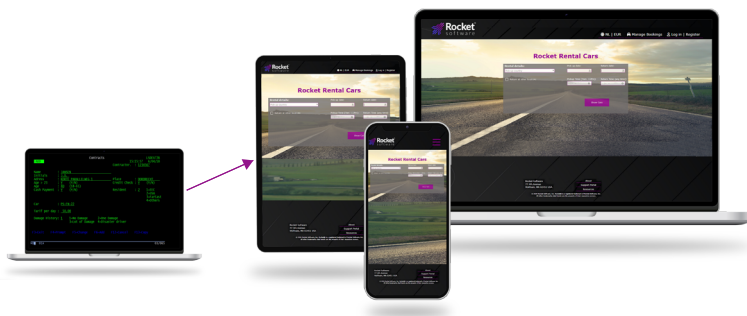
Modernize to any UI/UX — web, mobile, cloud — based on data, not guesswork. You can give your business a boost with a cloud-native UX by using Process Insights to inform your UI modernization plans. With the continuous modernization engine in place, you can stop, review, and repeat modernizations anytime, deploy and update modernizations at will, and get fresh insights in a snap.

Building consumer-grade experiences without core code expertise is now possible to increase productivity and improve customer satisfaction. There is no need to start from scratch, recode, and potentially lose core business logic.

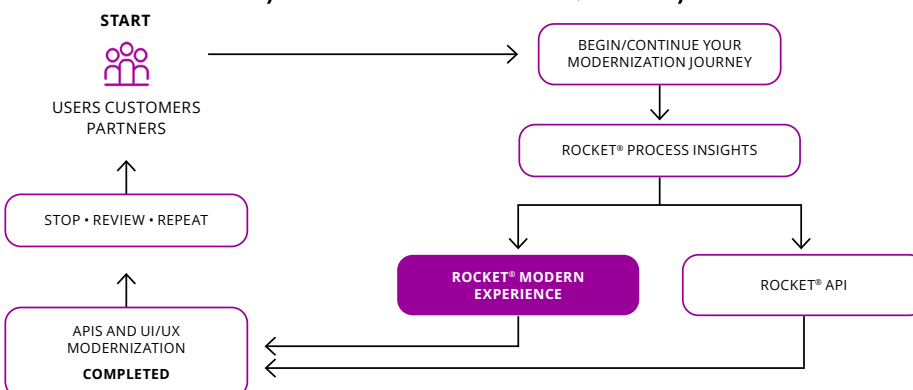
Deploy to any modern browser and OS from a single solution, centrally manage all versions and deployments from a single location, and develop/deploy your mobile app to Apple® iOS and Android® platforms in one development effort.

Rocket Modern Experience (Desktop Edition) transforms your green-screen app into a modern IBM i (AS/400 or IBM Z) process for employees and customers.

Rocket Modern Experience (Web Edition) makes it easy to recreate any IBM i/Z application as a user-friendly web application.



Reinvent your UI/UX, anywhere



Benefits

Build optimized workflows from complex green screens.

Simplify application maintenance.

Auto-flag potentially disruptive source changes.

Synchronize every green screen in your organization.

Reduce friction, improving user productivity and efficiency.

Attract digital-first customers and employees.

Host your modernized Web application on cloud and scale as per your business needs.

“Rocket Modern Experience answered the call. Rewriting our ERP apps was never an option and would have required us to start our business from scratch, costing millions of dollars.”

BOB VORMITTAG
President and CEO
Vormittag Associates, Inc.

Optimize with outside professional expertise

Every modernization strategy is different by definition. No matter where you are in your journey, you can likely extend your reach and impact by tapping into some of the best minds in modernization.

With more than 30 years of experience developing and delivering enterprise-class solutions, Rocket's Customer Solutions Engineering (CSE) team continues to help thousands of customers plan and execute projects, with exceptional outcomes.

Today, this includes ambitious modernization initiatives. Our CSE team can quickly step in and step up.

Discovery

- Analytic and advisory services.
- Solution design.

Value realization

- Implementation services.
- Training and mentoring.
- Integration services.

Optimization

- Health checks, security and compliance assessments.
- Product upgrades.
- Hybrid cloud implementation.
- Rehosting and replatforming.
- Custom development.

To your challenge, the CSE team brings:

- Modernization without disruption.
- Unmatched product and platform experience, in multiple industries.
- Proven methodologies with proven results.
- Bench strength to innovate.
- A partnership approach that delivers lasting results.

We aim to give you confidence, self-sufficiency, and maximum value in empowering your modernization journey.



Our modernization strategy was always centered around leveraging our mainframe data stores and decades of development. Rocket's collaboration has been a major asset in finding solutions and ensuring success through each stage of execution."

GARY FUSCO

Group Vice President,
Infrastructure Engineering
and Operations
M&T



Accelerate modernization. Now.

Facing competitive pressure to modernize but unsure where to start?
Need to optimize and automate processes but lack insight into
application usage? Struggling to create a project plan for management,
or optimize AI response times with API implementation? Are
undocumented business functions blocking your path?

Obstacles in continuous modernization are common, but with our
experienced solutions engineers, you'll have the expertise and support
needed to take control and execute your plan effectively. We're ready
to partner with you to turn your modernization goals into reality.

Get started today with continuous modernization

Today, continuous modernization powered by modern, integrated tools, data, and inspiration can meet these and other challenges. Rocket Continuous Modernization lets you discover workflows in totality to build a smart IBM® i or IBM Z® modernization plan — all in a single, integrated solution. With Rocket's CM-Kit, you can rest assured that you are well-equipped to tackle these challenges head-on, feeling secure in your modernization efforts.

Ready to jump-start your continuous modernization engine?

Let CM-Kit save you time and money, while you boost business productivity for all your users. And propel your vision and your business into the future.

Request a demo

CM-Kit technical requirements

Rocket Process Insights system requirements:

MX and Automation Hub

Install the MX and Automation hub on a Linux or Microsoft Windows system.

Requirement	Description
Operating System	Linux: Linux: Red Hat Enterprise Linux for x86_64 8.0 Microsoft Windows: Microsoft Windows Server 2022
Hardware	Hard drive: 4GB Minimum RAM: 4GB Minimum, 12GB Recommended
Software	For Linux only: Apache Tomcat 9.0.8.7 or later Note: For Microsoft Windows, Apache Tomcat is included with hub install.
Database	The following database servers are supported for hub production environments: <ul style="list-style-type: none">• PostgreSQL version 13.8 (default database server for Process Insights and a separate PostgreSQL database for the hub) Process Insights only runs with PostgreSQL databases.• Microsoft SQL Server 2019 The JDBC driver version must match the JVM version that the hub uses.• Oracle MySQL 8.0

Note: the current version of the hub is compatible with engine version 10.2.0 and higher only.

Security

The following table lists the security standards that should be supported when connecting to the engine.

Open SSL	Supported encryption	PKI certificate support
Version 3.0.5, which includes FIPS	<ul style="list-style-type: none">• AES 256-bit• AESBC• Base-64• FIPS 140-2• RSA public key up to 1024 bit	SSL certificate authentication (X.509) Note: Keystores and truststores must be created using the latest version of Java 17

Rocket Process Insights Recorder

Prerequisite: install the MX and Automation hub.

The following table describes the recommended requirements needed to install the Rocket Process Insights Recorder on Windows platforms and on the IBM i:

Requirement	Description
Operating System	Microsoft Windows Server 2022 IBM PASE for i: <ul style="list-style-type: none">• V7R4 and later• Keep current with IBM support level• Physical and virtual/PaaS server environments are supported
Software	Java 17, latest version, 64-bit Note: Keystores and truststores must be created using the latest version of Java 17
Database	PostgreSQL version 13.8

The following table lists the host services that should be running to make recordings with the Rocket Process Insights Recorder:

Service	Name	Port	Name (secure)	Port
DATABASE	as-database	8471	as-database-s	9471
FILE	as-file	8473	as-file-s	9473
PRINT	as-netprt	8474	as-netprt-s	9474
COMMAND	as-rmtcmd	8475	as-rmtcmd-s	9475
SIGNON	as-signon	8476	as-signon-s	9476

Terminal emulation

The following table describes the supported terminal emulation:

Platform	Emulation
IBM i	IBM 5250 (enhanced 5250 telnet protocol also known as TN5250e)
SIGNON	IBM 3270 (enhanced 3270 telnet protocol also known as TN3270e)

Rocket API system requirements:

Before installing Rocket API product components, review the recommended system requirements.

MX and Automation workbench

Install the MX and Automation workbench on a Microsoft Windows system only.

Requirement	Description
Operating System	Microsoft Windows 10 or 11, x86, 64-bit Hard drive: 5GB Minimum
Hardware	Hard drive: 5GB Minimum RAM: 8GB Minimum
Software	Eclipse: Version 4.26, included in the workbench install Java: Open JDK 17.0.8_7

Terminal emulations

The following table lists the terminal emulations that the workbench supports for each platform.

Platform	Supported emulation
HP NonStop	Tandem 6530
IBM i	IBM 5250
IBM Z	IBM 3270
ICL Mainframe	<ul style="list-style-type: none">DFPICL-Forms7561_IRSIS
MultiValue	<ul style="list-style-type: none">ADD5 ViewpointVT (vt100)
Linux/UNIX, Open MS, others	<ul style="list-style-type: none">ADD5 ViewpointPrismQume QVTTelevideo TVIVT (vt52, vt100, vt220, vt320, vt420)Wyse (Wyse50, Wyse60)

MX and Automation hub

Install the MX and Automation hub on a Linux or Microsoft Windows system.

Requirement	Description
Operating System	Linux: Linux: Red Hat Enterprise Linux for x86_64 8.0 Microsoft Windows: Microsoft Windows Server 2022
Hardware	Hard drive: 4GB Minimum RAM: 4GB Minimum, 12GB Recommended
Software	For Linux only: Apache Tomcat 9.0.8.7 or later Note: For Microsoft Windows, Apache Tomcat is included with hub install.
Database	The following database servers are supported for hub production environments: <ul style="list-style-type: none">• PostgreSQL version 13.8 (default database server)• Microsoft SQL Server 2019 The JDBC driver version must match the JVM version that the hub uses. <ul style="list-style-type: none">• Oracle MySQL 8.0

Note: the current version of the hub is compatible with engine version 10.2.0 and higher only.

API engine

Install the API engine on an IBM PASE for i, Linux, Linux on Power, UNIX, or Microsoft Windows system. To obtain the best results for engine and host application communications, install the engine on the same or similar platform as the host application.

Requirement	Description
Operating System	IBM PASE for i: <ul style="list-style-type: none">• V7R4 and later• Keep current with IBM support level• Physical and virtual/PaaS server environments are supported Linux, Linux on Power, or UNIX: <ul style="list-style-type: none">• AIX 7.2-TL3-SPO• Red Hat Enterprise Linux for Power LE 8.0• Red Hat Enterprise Linux for x86_64 8.0• Red Hat 8.0 Linux zSeries Microsoft Windows: Microsoft Windows Server 2019
Hardware	Hard drive: 2GB Minimum RAM: 4GB Minimum
Software	Java 17, latest version, 64-bit

API host connector

Install the API host connector on an AIX, IBM PASE for i, Linux, Linux on Power, or Microsoft Windows system.

Requirement	Description
Operating System	AIX, Linux, or Linux on Power: <ul style="list-style-type: none">AIX 7.2-TL3-SP0Red Hat Enterprise Linux for Power LE 8.0Red Hat Enterprise Linux for x86_64 8.0Red Hat 8.0 Linux zSeries IBM PASE for i: <ul style="list-style-type: none">V7R4 and later Keep current with IBM support level Physical and virtual PaaS server environments are supported Microsoft Windows: Microsoft Windows Server 2019
Hardware	Hard drive: 2GB Minimum RAM: 4GB Minimum
Software	Java 17, latest version, 64-bit

MX and Automation gateway

Install the MX and Automation gateway on a Linux/UNIX or Microsoft Windows system.

Requirement	Description
Operating System	Linux/UNIX: AIX 7.2-TL3-SPO Red Hat Enterprise Linux for x86_64 8.0 Microsoft Windows Server 2019
Hardware	Hard drive: 2GB Minimum RAM: 4GB Minimum
Software	Java 17, latest version, 64-bit
Database	Oracle MySQL 8.0 to store information in a production environment

IBM I Discovery Recorder

Requirement	Description
Software	Java 17, latest version, 64-bit

Security

Open SSL	Supported encryption	PKI certificate support
Version 3.0.5, which includes FIPS	<ul style="list-style-type: none">AES 256-bitAESBCBase-64FIPS 140-2RSA public key up to 1024 bit	SSL certificate authentication (X.509) Note: Keystores and truststores must be created using the latest version of Java 17

Rocket Modern Experience (Web Edition) system requirements:

MX and Automation workbench

Install the MX and Automation workbench on a Microsoft Windows system only.

Requirement	Description
Operating System	Microsoft Windows 10 or 11, x86, 64-bit Hard drive: 5GB Minimum
Hardware	Hard drive: 5GB Minimum RAM: 8GB Minimum
Software	Eclipse: Version 4.26, included in the workbench install Java: Open JDK 17.0.8_7

Terminal emulations

The following table lists the terminal emulations that the workbench supports for each platform.

Platform	Supported emulation
HP NonStop	Tandem 6530
IBM i	IBM 5250
IBM Z	IBM 3270
ICL Mainframe	<ul style="list-style-type: none">• DFP• ICL-Forms• 7561_IRSIS
MultiValue	<ul style="list-style-type: none">• ADDS Viewpoint• VT (vt100)
Linux/UNIX, Open MS, others	<ul style="list-style-type: none">• ADDS Viewpoint• Prism• Qume QVT• Televideo TVI• VT (vt52, vt100, vt220, vt320, vt420)• Wyse (Wyse50, Wyse60)

MX and Automation hub

Install the MX and Automation hub on a Linux or Microsoft Windows system.

Requirement	Description
Operating System	Linux: Linux: Red Hat Enterprise Linux for x86_64 8.0 Microsoft Windows: Microsoft Windows Server 2022
Hardware	Hard drive: 4GB Minimum RAM: 4GB Minimum, 12GB Recommended
Software	Java 17, latest version 64-bit For Linux only: Apache Tomcat 9.0.8.7 or later Note: For Microsoft Windows, Apache Tomcat is included with hub install.
Database	The following database servers are supported for hub production environments: <ul style="list-style-type: none">• PostgreSQL version 13.8 (default database server)• Microsoft SQL Server 2019 The JDBC driver version must match the JVM version that the hub uses. <ul style="list-style-type: none">• Oracle MySQL 8.0

Note: the current version of the hub is compatible with engine version 10.2.0 and higher only.

Security

Open SSL	Supported encryption	PKI certificate support
Version 3.3.1, which includes FIPS	<ul style="list-style-type: none">AES 256-bitAESBCBase-64FIPS 140-2RSA public key up to 1024 bit	SSL certificate authentication (X.509) Note: Keystores and truststores must be created using the latest version of Java 17

IBM Single-Sign-on Encryption	Additional security
<ul style="list-style-type: none">DESKerberosSHA-1	<ul style="list-style-type: none">SHA-2

Rocket MX Web engine

Install the MX Web engine on an IBM PASE for i, Linux, Linux on Power, UNIX, or Microsoft Windows system. To obtain the best results for engine and host application communications, install the engine on the same or similar platform as the host application.

Requirement	Description
Operating System	IBM PASE for i: <ul style="list-style-type: none">V7R4 and laterKeep current with IBM support levelPhysical and virtual/PaaS server environments are supported Linux, Linux on Power, or UNIX: <ul style="list-style-type: none">AIX 7.2-TL3-SPORed Hat Enterprise Linux for Power LE 8.0Red Hat Enterprise Linux for x86_64 8.0Red Hat 8.0 Linux zSeries Microsoft Windows: Microsoft Windows Server 2019
Hardware	Hard drive: 4GB Minimum RAM: 4GB Minimum
Software	Java 17, latest version 64-bit

Rocket MX web servlet

The following table describes the recommended requirements for the web servlet:

Requirement	Description
Web Application Server	Apache Tomcat 9.0.87 Integrated Web Application Server for IBM i 8.5 (IBM JVM8)
Software	Java 17, latest version 64-bit
Browser	<ul style="list-style-type: none">• Google Chrome (64-bit)• Mozilla Firefox• Microsoft Edge Chromium Use the latest general release version.

Rocket MX Web desktop client

The following table describes the recommended requirements to install the MX Web desktop client:

Requirement	Description
Operating System	<ul style="list-style-type: none">• Microsoft Windows 10• .NET Framework 4.7.2

Rocket Modern Experience (Desktop Edition) system requirements:

Before installing Rocket Modern Experience product components, review the recommended system requirements.

MX and Automation workbench

Install the MX and Automation workbench on a Microsoft Windows system only.

Requirement	Description
Operating System	Microsoft Windows 10 or 11, x86, 64-bit Hard drive: 5GB Minimum
Hardware	Hard drive: 5GB Minimum RAM: 8GB Minimum
Software	Eclipse: Version 4.26, included in the workbench install Java: Open JDK 17.0.8_7

Terminal emulations

The following table lists the terminal emulations that the workbench supports for each platform.

Platform	Supported emulation
HP NonStop	Tandem 6530
IBM i	IBM 5250
IBM Z	IBM 3270
ICL Mainframe	<ul style="list-style-type: none">• DFP• ICL-Forms• 7561_IRSIS
MultiValue	<ul style="list-style-type: none">• ADDS Viewpoint• VT (vt100)
Linux/UNIX, Open MS, others	<ul style="list-style-type: none">• ADDS Viewpoint• Prism• Qume QVT• Televideo TVI• VT (vt52, vt100, vt220, vt320, vt420)• Wyse (Wyse50, Wyse60)

MX and Automation hub

Install the MX and Automation hub on a Linux or Microsoft Windows system.

Requirement	Description
Operating System	Linux: Linux: Red Hat Enterprise Linux for x86_64 8.0 Microsoft Windows: Microsoft Windows Server 2022
Hardware	Hard drive: 4GB Minimum RAM: 4GB Minimum, 12GB Recommended
Software	Java 17, latest version 64-bit For Linux only: Apache Tomcat 9.0.8.7 or later Note: For Microsoft Windows, Apache Tomcat is included with hub install.
Database	The following database servers are supported for hub production environments: <ul style="list-style-type: none">• Microsoft SQL Server 2019 The JDBC driver version must match the JVM version that the hub uses. <ul style="list-style-type: none">• Oracle MySQL 8.0

Security

Open SSL	Supported encryption	PKI certificate support
Version 3.3.1, which includes FIPS	<ul style="list-style-type: none">• AES 256-bit• AESBC• Base-64• FIPS 140-2• RSA public key up to 1024 bit	SSL certificate authentication (X.509) Note: Keystores and truststores must be created using the latest version of Java 17

Rocket MX GUI engine

Install the MX GUI engine on an IBM PASE for i, Linux, Linux on Power, UNIX, or Microsoft Windows system. To obtain the best results for engine and host application communications, install the engine on the same or similar platform as the host application.

Requirement	Description
Operating System	IBM PASE for i: <ul style="list-style-type: none">• V7R4 and later• Keep current with IBM support level• Physical and virtual/PaaS server environments are supported Linux, Linux on Power, or UNIX: <ul style="list-style-type: none">• AIX 7.2-TL3-SPO• Red Hat Enterprise Linux for Power LE 8.0• Red Hat Enterprise Linux for x86_64 8.0• Red Hat 8.0 Linux zSeries Microsoft Windows: Microsoft Windows Server 2019
Hardware	Hard drive: 4GB Minimum RAM: 4GB Minimum
Software	Java 17, latest version 64-bit

Rocket MX Desktop client

The following table describes the recommended requirements to install the MX Desktop Windows Client:

Requirement	Description
Operating System	Microsoft Windows 10
Browser	Embedded ActiveX clients in browsers are only supported in Microsoft Internet Explorer. Non-embedded Desktop Windows clients started in browsers are supported by the following browsers: <ul style="list-style-type: none">• Microsoft Internet Explorer• Microsoft Edge (no ActiveX support)• Mozilla Firefox (no ActiveX support)• Google Chrome (no ActiveX support)• Opera (no ActiveX support)

The following table describes the recommended requirements to install the MX Desktop Java Client:

Requirement	Description
Software	Java 17, latest version, 64-bit

About Rocket Software

Rocket Software is the global technology leader in modernization and partner of choice that empowers the world's leading businesses on their modernization journeys, spanning core systems to the cloud. Trusted by over 12,500 customers and 750 partners, and with more than 3,000 global employees, Rocket Software enables customers to maximize their data, applications, and infrastructure to deliver critical services that power our modern world. Rocket Software is a privately held U.S. corporation headquartered in the Boston area with centers of excellence strategically located around the world. Rocket Software is a portfolio company of Bain Capital Private Equity. Follow Rocket Software on [LinkedIn](#) and [X](#).

[Visit RocketSoftware.com >](#)



Modernization. Without Disruption.™

© Rocket Software, Inc. or its affiliates 2024. All rights reserved. Rocket and the Rocket Software logos are registered trademarks of Rocket Software, Inc. Other product and service names might be trademarks of Rocket Software or its affiliates.

IBM, IBM i and IBM Z are trademarks of International Business Machines Corporation, registered in many jurisdictions worldwide.

MAR-10806_Brochure_CM_KIT_V7

